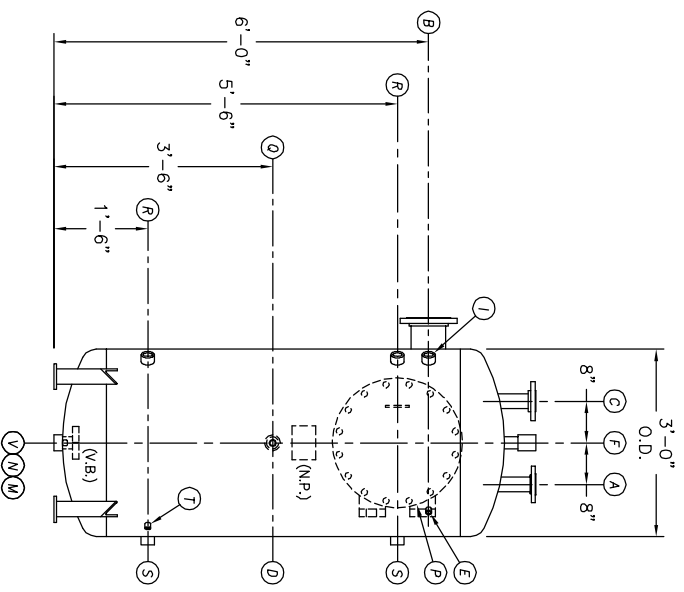
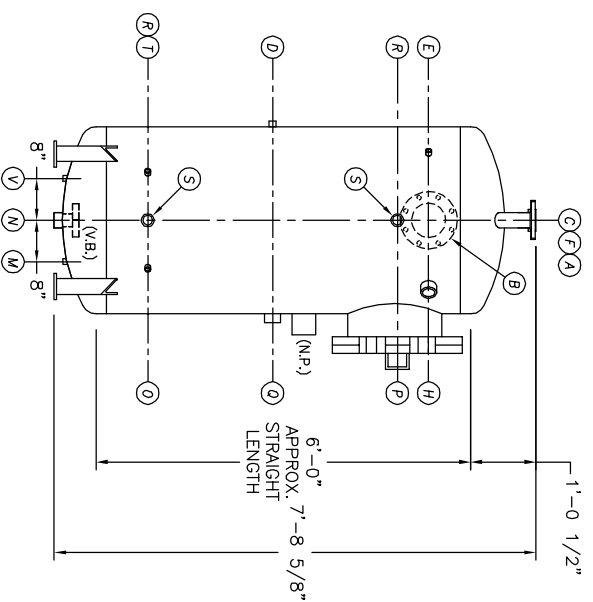


TOP VIEW



FRONT VIEW




END VIEW

- NOTES:**
- SEE CONNECTION SCHEDULE FOR NOZZLE DESCRIPTIONS.
 - STRAIGHT LENGTHS ARE APPROXIMATE. OVERALL LENGTH (OAL) IS TO BE HELD.
 - FOR MISCELLANEOUS DETAILS SEE MD DRAWINGS
 - DIMENSIONS ARE GIVEN FROM CENTER LINE OF TANKS TO NOZZLE CENTER LINE OR OUTSIDE FACE OF FLANGE.
 - G.B. = GRAB BAR D.S. = DRIP SHIELD
V.B. = VORTEX BREAKER N.S. = NEAR SIDE
N.P. = NAME PLATE T.B. = TEE BARFLE
F.S. = FAR SIDE ϕ = CENTER LINE

NOTE:
PUMP SUCTION NOZZLES
WILL BE ADDED TO MATCH
ANY PUMPS SUPPLIED BY KCD

UMENT AND THE INFORMATION IT
HAVE BEEN FURNISHED FOR USE
BY YOUR OWN ORGANIZATION ONLY AND
NOT FOR REPRODUCTION OR FOR
REPRODUCTION CONSISTENT WITH THE
PURPOSE OF THE ORIGINAL DRAWING.
NO LIABILITY IS ASSUMED FOR
DAMAGES OR INJURY TO PERSONS OR
PROPERTY OF ANY KIND ARISING
FROM THE USE OF THIS DRAWING.
IT SHALL BE FURNISHED TO ANY
PARTY WITHOUT THE WRITTEN
CONSENT OF KANSAS CITY DEERATOR CO.,
2400 OVERLAND PARK, KANSAS 66209

NO.	DATE	DESCRIPTION OF CHANGE
-	-	-
-	-	-
-	-	-
-	-	-
-	-	-

CLIENT:			
 <p>KANSAS CITY DEERATOR CO. 6731 W. 121st STREET OVERLAND PARK, KANSAS 66209 (913) 338-2111 FAX (913) 338-2144</p>			
JOB #	SCALE	DESIGNED	DRAWN
STD	NTS	MK	GENI
		PC	2003
		2003	2003
TITLE: GENERAL ARRANGEMENT			
MODEL: VSP-3006-020			
DWG. NO.: VSP-3006-020			