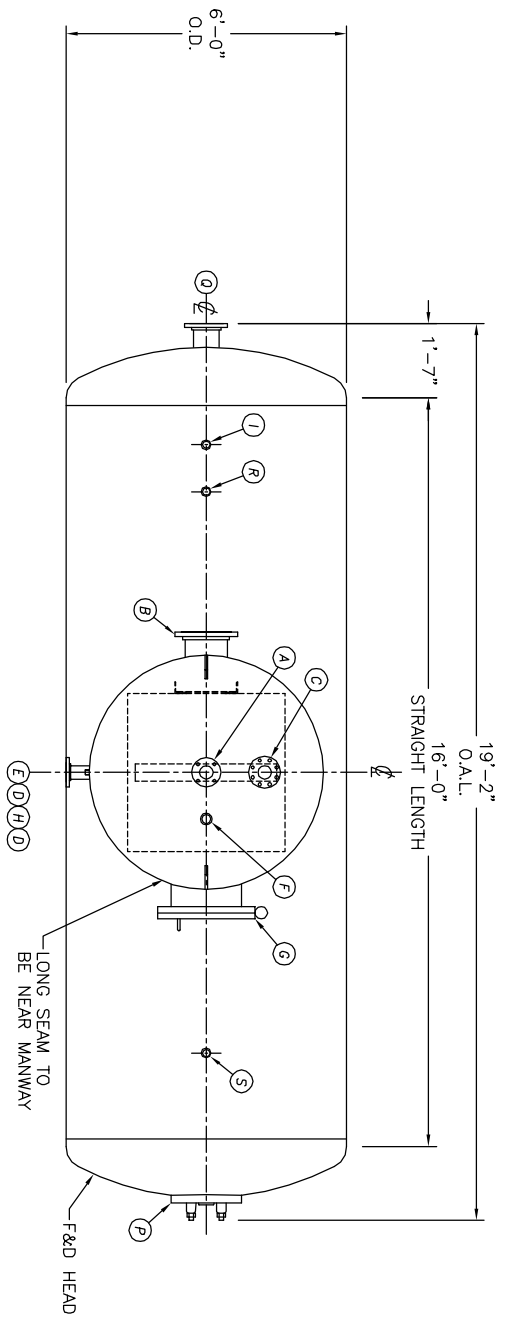


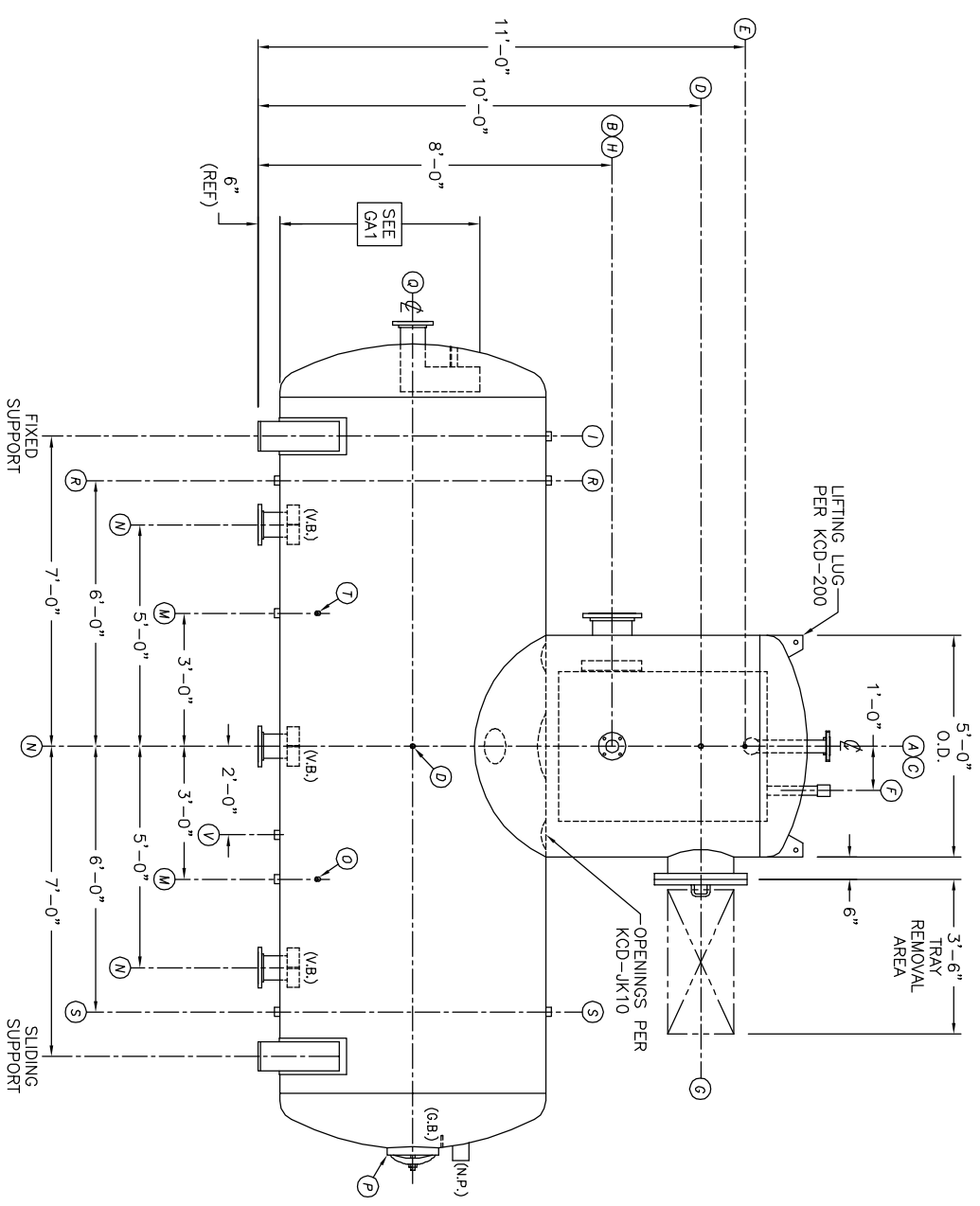
UMENT AND THE INFORMATION IT
HAVE BEEN FURNISHED FOR USE
OWN ORGANIZATION ONLY AND
PURPOSE CONSISTENT WITH THE
ON BETWEEN YOUR ORGANIZATION
AS CITY DEARATOR COMPANY.
IT SHALL BE FURNISHED TO ANY
PARTY WITHOUT THE WRITTEN
OF KANSAS CITY DEARATOR CO.,
LAND PARK, KANSAS 66209



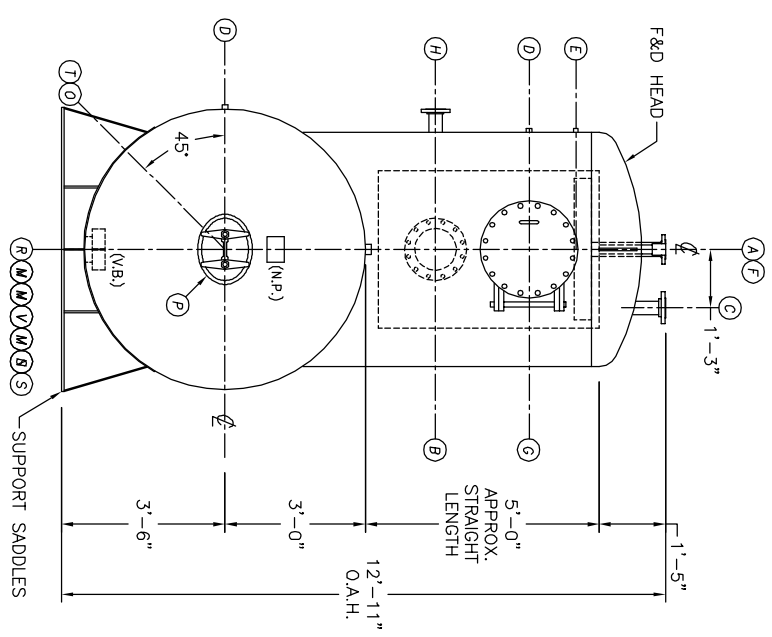
TOP VIEW

NOTE:
TURN ON/OFF
1-SUCT-GA2 IF YOU HAVE ONE SUCTION OR
2-SUCT-GA2-4 IF YOU HAVE TWO SUCTIONS.
DEPENDING ON NEED, BEFORE USING THIS DRAWING.
TURN OFF NOTE LAYER BEFORE USING THIS DRAWING.

- NOTES:
- SEE CONNECTION SCHEDULE FOR NOZZLE DESCRIPTIONS.
 - STRAIGHT LENGTHS ARE APPROXIMATE. OVERALL LENGTH (OAL) IS TO BE HELD.
 - FOR MISCELLANEOUS DETAILS SEE MD DRAWINGS
 - DIMENSIONS ARE GIVEN FROM CENTER LINE OF TANKS TO NOZZLE CENTER LINE OR OUTSIDE FACE OF FLANGE.
 - G.B. = GRAB BAR D.S. = DRIP SHIELD
V.B. = VORTEX BREAKER N.S. = NEAR SIDE
N.P. = NAME PLATE T.B. = TEE BAFFLE
F.S. = FAR SIDE ☐ = CENTER LINE



FRONT VIEW



END VIEW

NOTE:
PUMP SUCTION NOZZLES
WILL BE ADDED TO MATCH
ANY PUMPS SUPPLIED BY KCD

NO.	DATE	DESCRIPTION OF CHANGE
-	-	-
-	-	-
-	-	-
-	-	-

CLIENT:	KANSAS CITY DEARATOR CO.
JOB #	STD
SCALE	NTS
DESIGNED	MK
DRAWN	GENI
CHECKED	PC
DATE	6-16 2004
UTD	6-16 2004

TITLE: GENERAL ARRANGEMENT

MODEL: TCP149-6016

DWG. NO.: TCP149-6016

KANSAS CITY DEARATOR CO.
6731 W. 121st STREET
OVERLAND PARK, KANSAS 66209
(913) 338-2111 FAX (913) 338-2144

BY