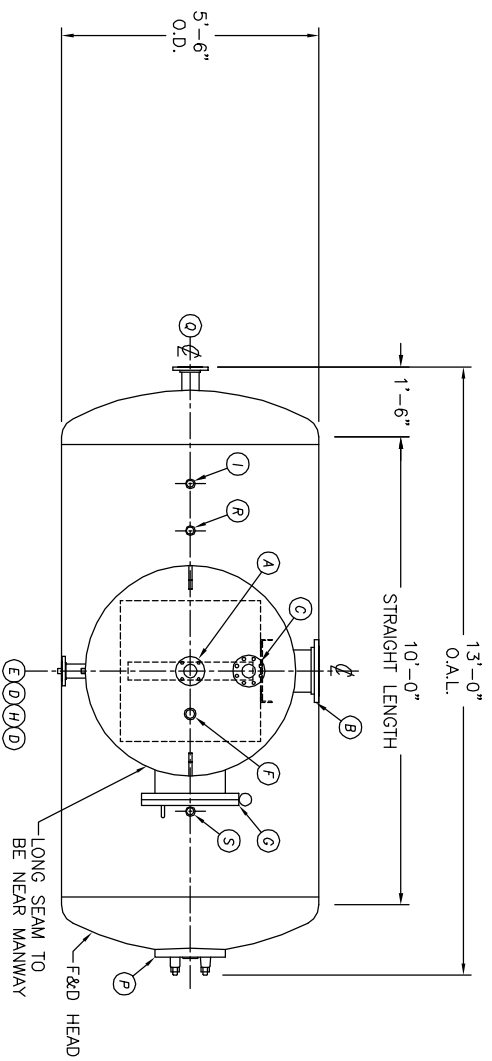
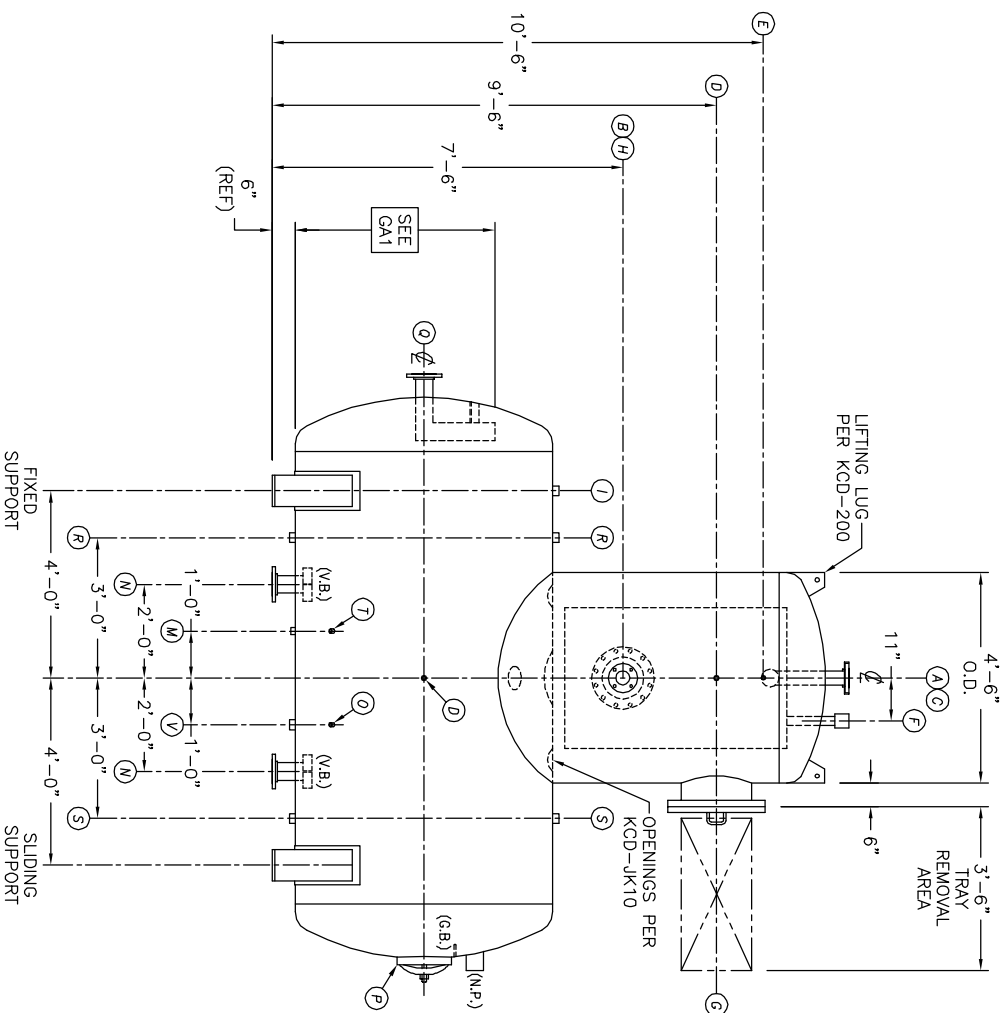


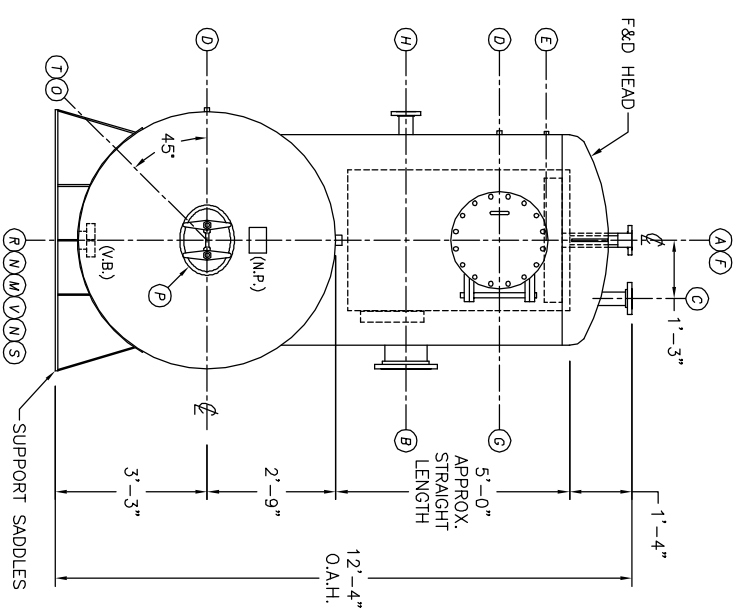
ALL INFORMATION CONTAINED HEREIN IS UNCLASSIFIED EXCEPT WHERE SHOWN OTHERWISE. IT IS THE PROPERTY OF KANSAS CITY DEARATOR CO. AND IS LOANED TO YOUR COMPANY FOR YOUR USE ONLY. IT SHALL BE FURNISHED TO ANY PARTY WITHOUT THE WRITTEN CONSENT OF KANSAS CITY DEARATOR CO., KANSAS 66209



TOP VIEW



FRONT VIEW



END VIEW

- NOTES:**
- SEE CONNECTION SCHEDULE FOR NOZZLE DESCRIPTIONS.
  - STRAIGHT LENGTHS ARE APPROXIMATE. OVERALL LENGTH (OAL) IS TO BE HELD.
  - FOR MISCELLANEOUS DETAILS SEE MD DRAWINGS
  - DIMENSIONS ARE GIVEN FROM CENTER LINE OF TANKS TO NOZZLE CENTER LINE OR OUTSIDE FACE OF FLANGE:
    - D.S. = DRIP SHIELD
    - N.S. = NEAR SIDE
    - F.S. = FAR SIDE
  - G.B. = GRAB BAR
  - V.B. = VORTEX BREAKER
  - N.P. = NAME PLATE
  - T.B. = TEE BAFFLE
  - φ = CENTER LINE

**NOTE:**  
PUMP SUCTION NOZZLES WILL BE ADDED TO MATCH ANY PUMPS SUPPLIED BY KCD

NO.	DATE	DESCRIPTION OF CHANGE
-	-	-
-	-	-
-	-	-
-	-	-

CLIENT:	KANSAS CITY DEARATOR CO. 6731 W. 121st STREET OVERLAND PARK, KANSAS 66209 (913) 338-2111 FAX (913) 338-2144					
JOB #	SCALE	DESIGNED	DRAWN	CHECKED	DATE	UTD
STD	NTS	MK	GENI	PC	6-04 2004	6-04 2004
TITLE: GENERAL ARRANGEMENT						
MODEL: TCP122-5510						
DWG. NO.: TCP122-5510						